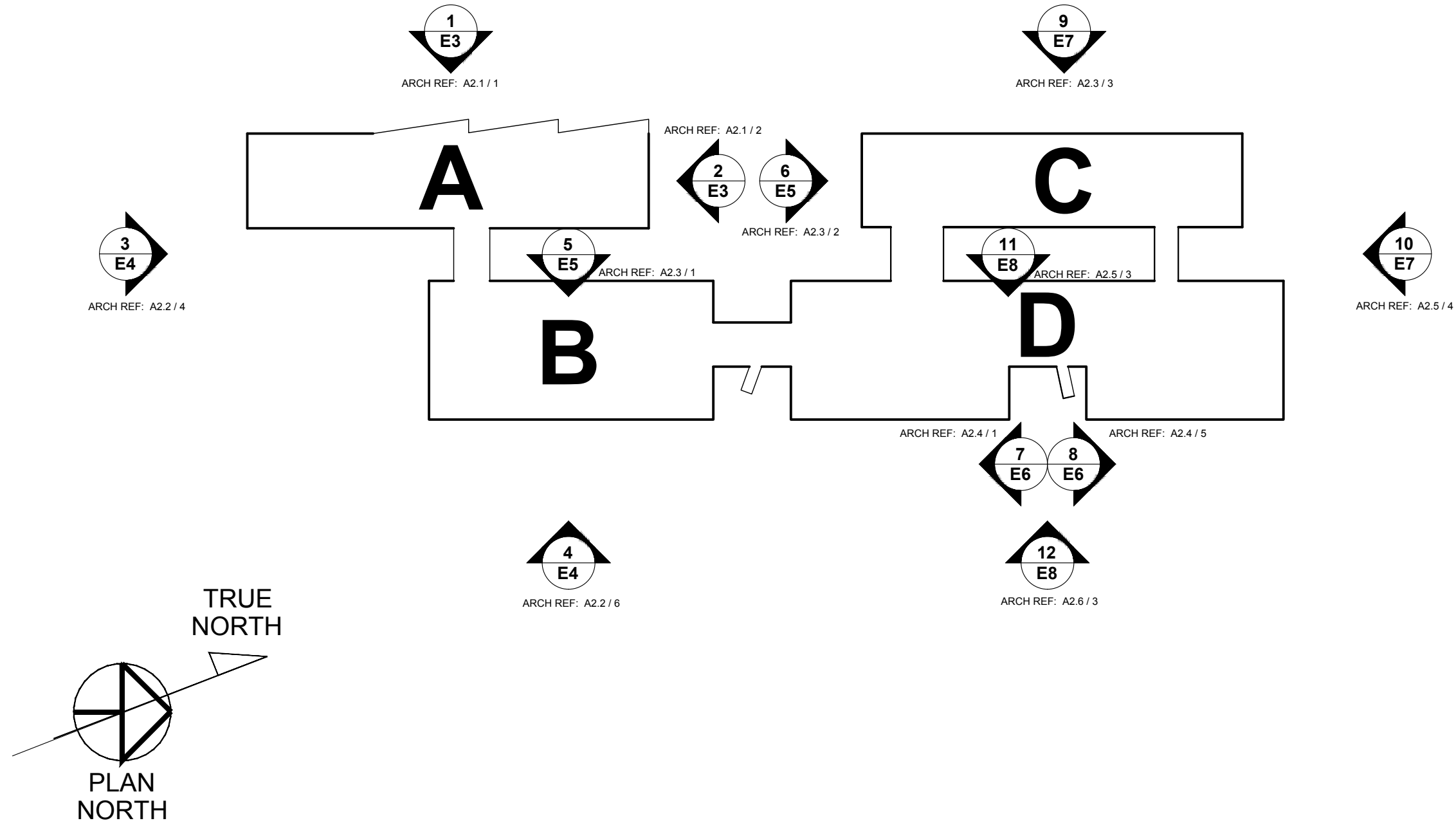


ELEVATIONS BUILDING KEY

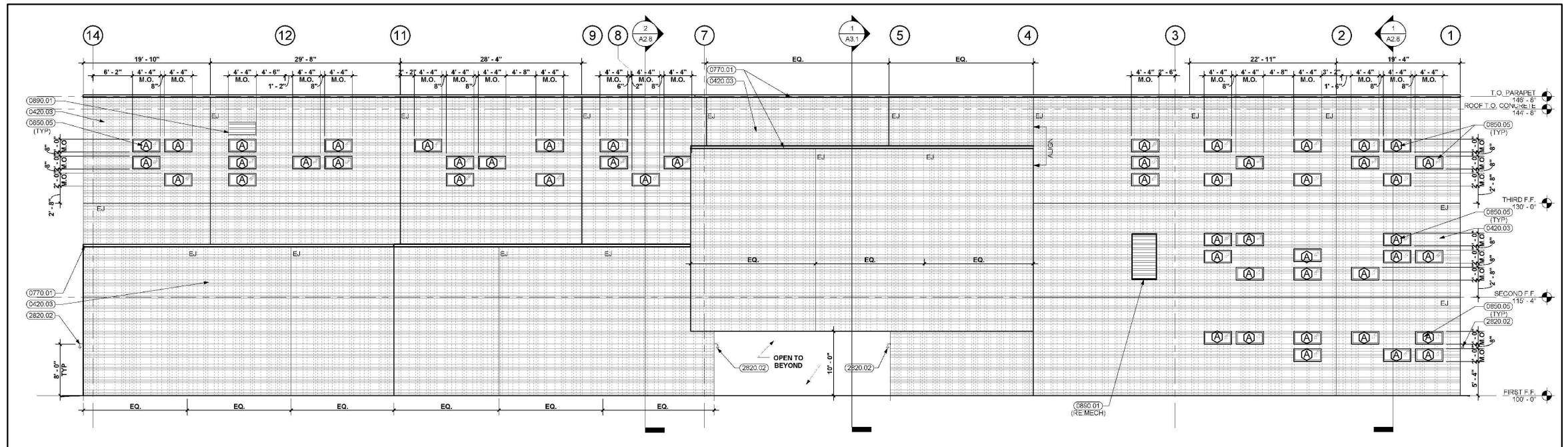


SUBJ	BY	DATE	DESCRIPTION
1	fp	10/19/17	FIRST SUBMITTAL
2	fp	10/22/17	REVISE TO NAIL-FIN-TYPE WINDOWS
3	fp	10/29/17	INTERIOR STOREFRONT WALL SYSTEM & REVISIONS
4	fp	11/01/17	INTERIOR STOREFRONT WALL SYSTEM & REVISIONS
5	fp	11/01/17	REPLACE VINYL WINDOWS WITH SHOWCASE 143 FIXED WINDOWS
6	fp	12/01/18	INCLUDE ASI 010, AND MODIFY INTERIOR GLASS PARTITION ELEVATIONS

THURMAN FONDREN GLASS
 6933 WEBER RD. CORPUS CHRISTI, TX 78413
 361/854-2316 361/853-8325 FAX

PROJECT
 DEL MAR COLLEGE (GAMC)
NEW ACADEMIC/MUSIC, PHASE 2
 ARCHITECT
 WKMIC ARCHITECTS
 361-887-6696
 GENERAL CONTRACTOR
 BARTLETT COCKE/BEECROFT, A JOINT
 361-982-6791

PROJECT NO.	TF-1710-01
DRAWN BY	fp
DATE	02/01/18
SCALE	1" = 20'-0"
DRAWING	ELEVATIONS
SHEET	E1



BLDG "A"

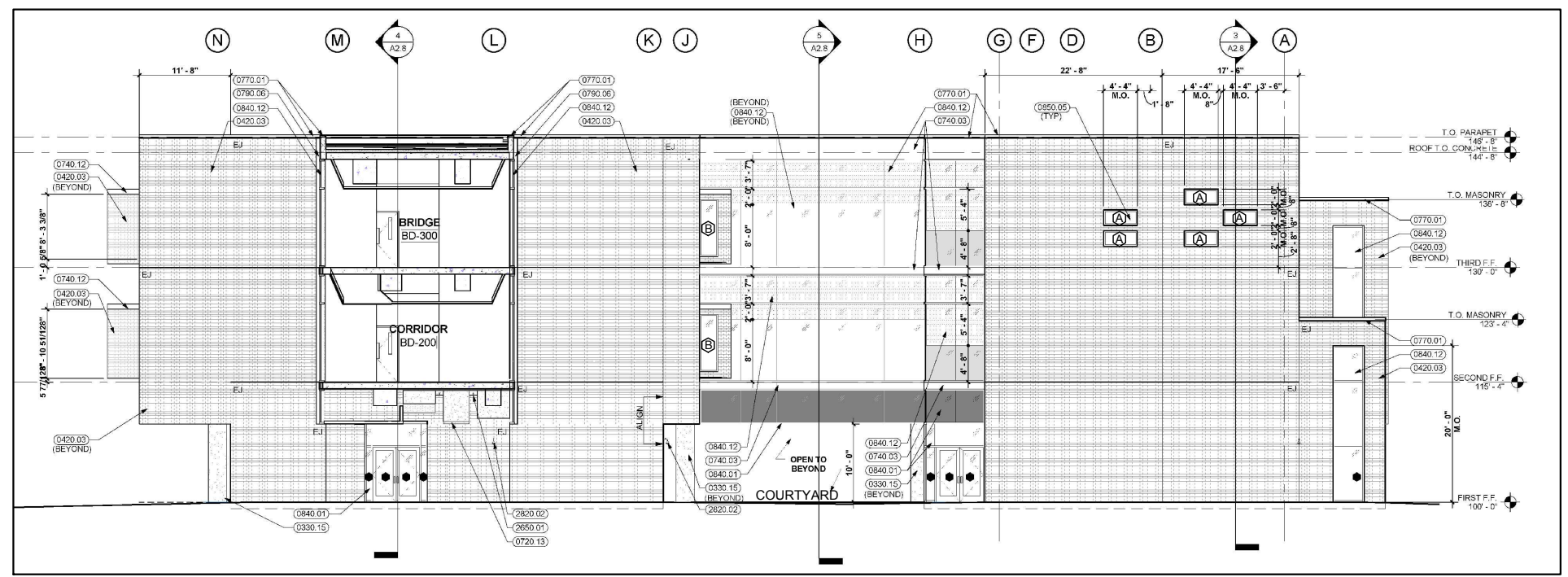
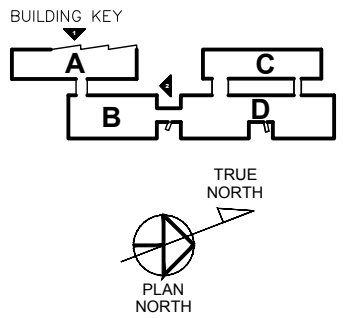
EXTERIOR ELEVATION

SCALE: 1" = 20'
ARCH. REF.: A2.1/1



AREA "A" (WEST)

SYSTEM: SHOWCASE 413 FIXED VINYL WINDOWS



BLDG "B"

BLDG "A"

EXTERIOR ELEVATION

SCALE: 1" = 20-0"
ARCH. REF.: A2.1/2



AREA "A+B" (NORTH)

SYSTEM: SHOWCASE 413 FIXED VINYL WINDOWS

KEYNOTES

- 0330.10 CONCRETE STAIR
- 0330.15 CONCRETE COLUMN (RE-STRUCTURAL) SMOOTH-RUBBED FINISH
- 0420.03 4" FACE BRICK
- 0570.03 DECORATIVE GUARDRAIL SYSTEM (3'-6" HIGH)
- 0720.13 E.I.F.S. SOFFIT / FASCIA
- 0740.03 PREFINISHED METAL WALL / SOFFIT PANEL WITH REVEALS
- 0740.12 PREFINISHED METAL STANDING SEAM PANELS (TYPE 2)
- 0770.01 PREFINISHED METAL COPING SYSTEM
- 0770.05 STAINLESS STEEL REGLET WITH SEALANT AND COUNTERFLASHING
- 0790.06 2" METAL WALL EXPANSION JOINT COVER
- 0810.04 HOLLOW METAL DOOR AND FRAME
- 0840.01 ALUMINUM STOREFRONT
- 0840.02 ALUMINUM STOREFRONT DOOR
- 0840.12 GLAZED ALUMINUM CURTAINWALL
- 0850.05 FIXED VINYL WINDOW
- 0880.09 GLASS TYPE # 9 (1" CLEAR, INSULATED, LOW-E, TEMPERED)
- 0890.01 PREFINISHED FIXED ALUMINUM LOUVER (WITH INSECT SCREEN)
- 2210.13 ROOF DRAIN / OVERFLOW ROOF DRAIN
- 2650.01 RECESSED LIGHT FIXTURE
- 2650.03 SURFACE-MOUNTED LIGHT FIXTURE
- 2820.02 CCTV CAMERA AND MOUNT
- 3290.01 LANDSCAPE BED

- (A) - TYPE "A" (52"X24") CLEAR GLASS
- (AO) - TYPE "AO" (52"X24") OPAQUE GLASS
- (B) - TYPE "B" (28"X84") CLEAR GLASS

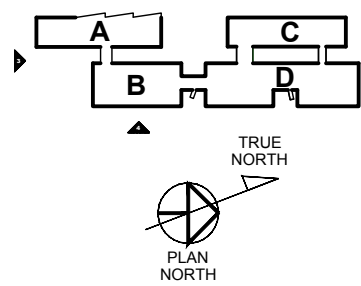
THURMAN FONDREN GLASS
6933 WEBER RD. CORPUS CHRISTI, TX 78413
361/854-2316 361/853-8325 FAX

PROJECT: DEL MAR COLLEGE (GAMC)
NEW ACADEMIC/MUSIC, PHASE 2
ARCHITECT: WKMC ARCHITECTS
361-887-6696
GENERAL CONTRACTOR: BARTLETT COCKE/BEECROFT, A JOINT
361-882-6791

PROJECT NO.	TF-1710-01
DRAWN BY	fp
DATE	02/01/18
SCALE	1" = 20'-0"
DRAWING	ELEVATIONS
SHEET	E3

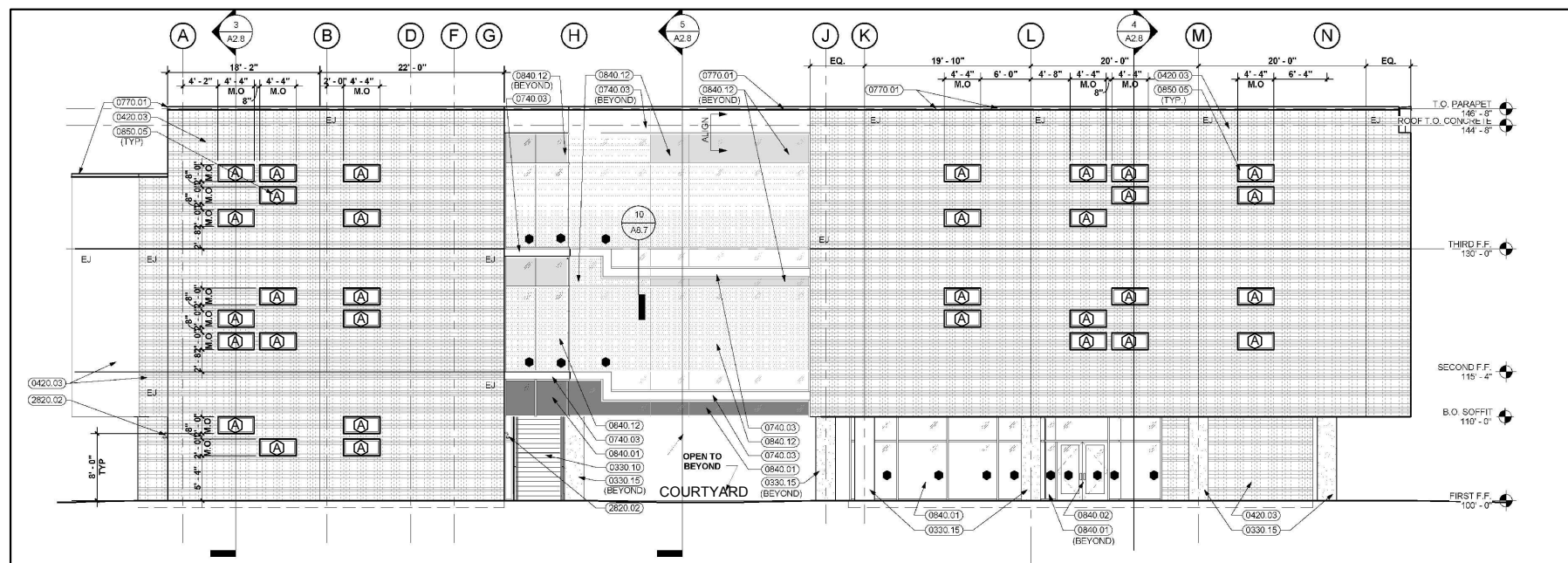
SUB	BY	DATE	DESCRIPTION
6	fp	02/01/18	INCLUDE A31 010, AND MODIFY INTERIOR GLASS PARTITION ELEVATIONS
5	fp	1/26/18	REPLACE VINYL WINDOWS WITH SHOWCASE 413 FIXED WINDOWS
4	fp	11/01/17	INTERIOR STOREFRONT WALL SYSTEM & REVISIONS
3	fp	10/29/17	INTERIOR STOREFRONT WALL SYSTEM & REVISIONS
2	fp	10/22/17	REVISE TO NAIL-FIN-TYPE WINDOWS
1	fp	10/19/17	FIRST SUBMITTAL

BUILDING KEY



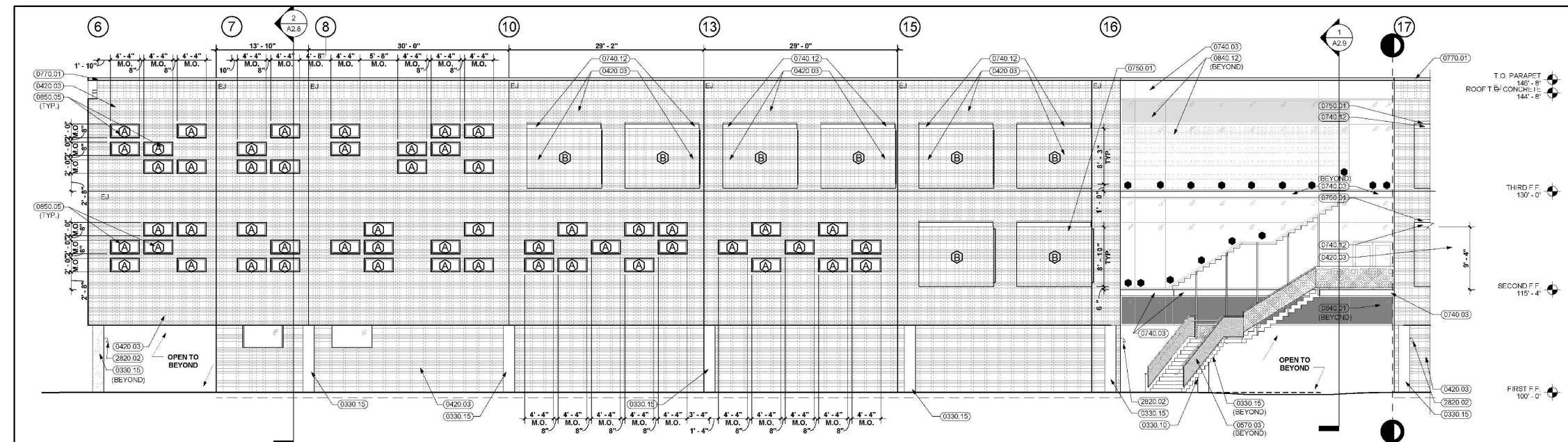
KEYNOTES

- 0330.10 CONCRETE STAIR
- 0330.15 CONCRETE COLUMN (RE. STRUCTURAL) SMOOTH-RUBBED FINISH
- 0420.03 4" FACE BRICK
- 0570.03 DECORATIVE GUARDRAIL SYSTEM (3'-6" HIGH)
- 0720.13 E.I.F.S. SOFFIT / FASCIA
- 0740.03 PREFINISHED METAL WALL / SOFFIT PANEL WITH REVEALS
- 0740.12 PREFINISHED METAL STANDING SEAM PANELS (TYPE 2)
- 0770.01 PREFINISHED METAL COPING SYSTEM
- 0770.05 STAINLESS STEEL REGLET WITH SEALANT AND COUNTERFLASHING
- 0790.06 2" METAL WALL EXPANSION JOINT COVER
- 0810.04 HOLLOW METAL DOOR AND FRAME
- 0840.01 ALUMINUM STOREFRONT
- 0840.02 ALUMINUM STOREFRONT DOOR
- 0840.12 GLAZED ALUMINUM CURTAINWALL
- 0850.05 FIXED VINYL WINDOW
- 0880.09 GLASS TYPE # 9 (1" CLEAR, INSULATED, LOW-E, TEMPERED)
- 0890.01 PREFINISHED FIXED ALUMINUM LOUVER (WITH INSECT SCREEN)
- 2210.13 ROOF DRAIN / OVERFLOW ROOF DRAIN
- 2650.01 RECESSED LIGHT FIXTURE
- 2650.03 SURFACE-MOUNTED LIGHT FIXTURE
- 2820.02 CCTV CAMERA AND MOUNT
- 3290.01 LANDSCAPE BED



BLDG "A" **BLDG "B"**

EXTERIOR ELEVATION 3 AREA "A+B" (AOUTH)
 SCALE: 1" = 20'-0"
 ARCH. REF.: A2.2/4
 SYSTEM: SHOWCASE 413 FIXED VINYL WINDOWS



EXTERIOR ELEVATION 4 AREA "B" (EAST)
 SCALE: 1" = 20'-0"
 ARCH. REF.: A2.2/6
 SYSTEM: SHOWCASE 413 FIXED VINYL WINDOWS

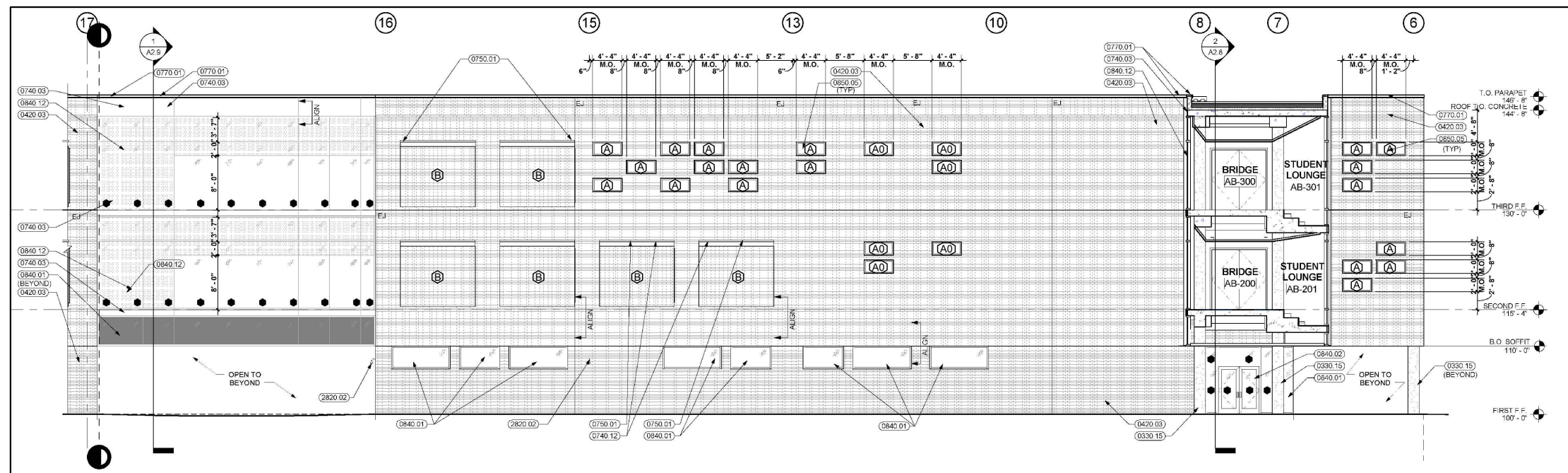
- (A) - TYPE "A" (52"X24") CLEAR GLASS
- (AO) - TYPE "AO" (52"X24") OPAQUE GLASS
- (B) - TYPE "B" (28"X84") CLEAR GLASS

NO.	DATE	DESCRIPTION
1	10/19/17	FIRST SUBMITTAL
2	10/22/17	REVISE TO NAIL-FIN-TYPE WINDOWS
3	10/29/17	INTERIOR STOREFRONT WALL SYSTEM & REVISIONS
4	11/01/17	REPLACE VINYL WINDOWS WITH SHOWCASE 143 FIXED WINDOWS
5	12/6/18	REPLACE VINYL WINDOWS WITH SHOWCASE 143 FIXED WINDOWS
6	02/01/18	INCLUDE ASI 010, AND MODIFY INTERIOR GLASS PARTITION ELEVATIONS

THURMAN FONDREN GLASS
 6933 WEBER RD. CORPUS CHRISTI, TX 78413
 361/854-2316 361/853-8325 FAX

PROJECT: DEL MAR COLLEGE (GAMC)
NEW ACADEMIC/MUSIC, PHASE 2
 ARCHITECT: WKMC ARCHITECTS
 361-887-6696
 GENERAL CONTRACTOR: BARTLETT COCKE/BEECROFT, A JOINT
 361-882-6791

PROJECT NO.	TF-1710-01
DRAWN BY	fp
DATE	02/01/18
SCALE	1" = 20'-0"
DRAWING	ELEVATIONS
SHEET	E4

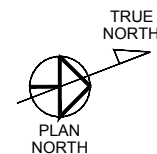
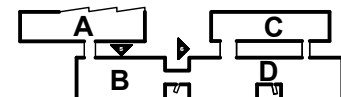


EXTERIOR ELEVATION

SCALE: 1" = 20'-0"
ARCH. REF.: A2.3/1

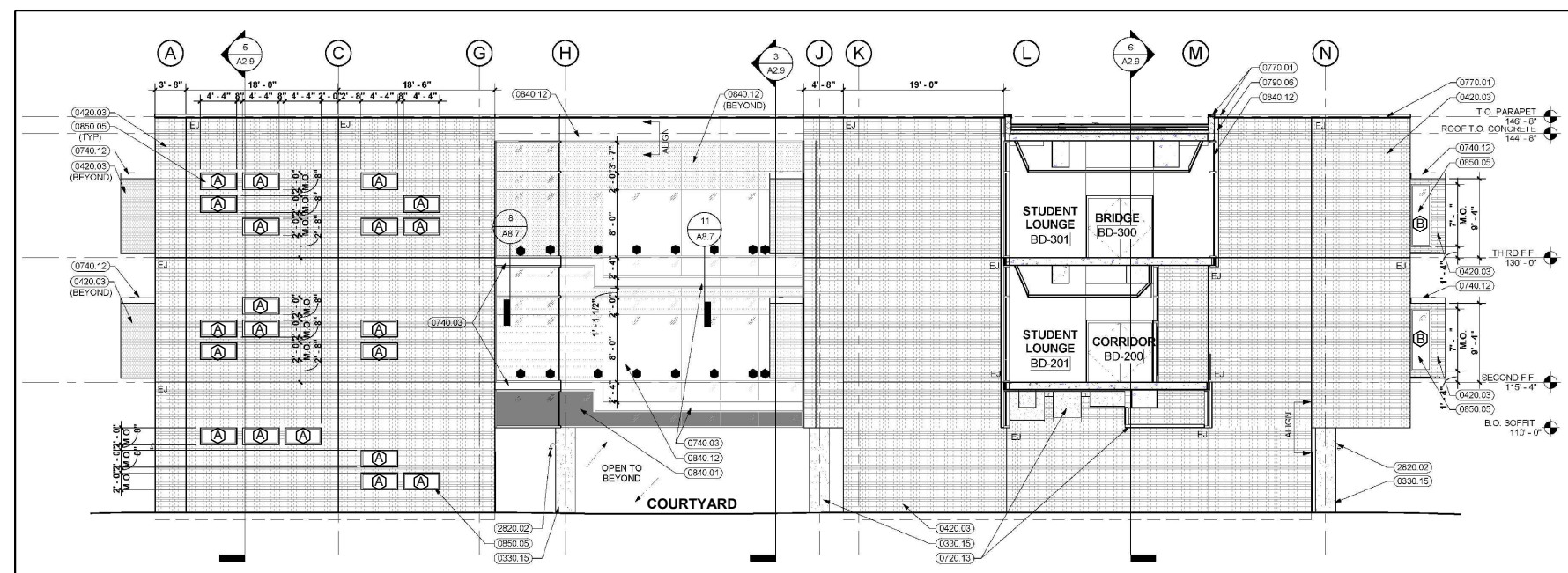
5 AREA "B" (WEST)
SYSTEM: SHOWCASE 413 FIXED VINYL WINDOWS

BUILDING KEY



KEYNOTES

- 0330.10 CONCRETE STAIR
- 0330.15 CONCRETE COLUMN (RE: STRUCTURAL) SMOOTH-RUBBED FINISH
- 0420.03 4" FACE BRICK
- 0570.03 DECORATIVE GUARDRAIL SYSTEM (3'-6" HIGH)
- 0720.13 E.I.F.S. SOFFIT / FASCIA
- 0740.03 PREFINISHED METAL WALL / SOFFIT PANEL WITH REVEALS
- 0740.12 PREFINISHED METAL STANDING SEAM PANELS (TYPE 2)
- 0770.01 PREFINISHED METAL COPING SYSTEM
- 0770.05 STAINLESS STEEL REGLET WITH SEALANT AND COUNTERFLASHING
- 0790.06 2" METAL WALL EXPANSION JOINT COVER
- 0810.04 HOLLOW METAL DOOR AND FRAME
- 0840.01 ALUMINUM STOREFRONT
- 0840.02 ALUMINUM STOREFRONT DOOR
- 0840.12 GLAZED ALUMINUM CURTAINWALL
- 0850.05 FIXED VINYL WINDOW
- 0880.09 GLASS TYPE #9 (1" CLEAR, INSULATED, LOW-E, TEMPERED)
- 0890.01 PREFINISHED FIXED ALUMINUM LOUVER (WITH INSECT SCREEN)
- 2210.13 ROOF DRAIN / OVERFLOW ROOF DRAIN
- 2650.01 RECESSED LIGHT FIXTURE
- 2650.03 SURFACE-MOUNTED LIGHT FIXTURE
- 2820.02 CCTV CAMERA AND MOUNT
- 3290.01 LANDSCAPE BED



EXTERIOR ELEVATION

SCALE: 1" = 20'-0"
ARCH. REF.: A2.3/2

6 AREA "C+D" (SOUTH)
SYSTEM: SHOWCASE 413 FIXED VINYL WINDOWS

- (A) - TYPE "A" (52"X24") CLEAR GLASS
- (AO) - TYPE "AO" (52"X24") OPAQUE GLASS
- (B) - TYPE "B" (28"X84") CLEAR GLASS

THURMAN FONDREN GLASS
6933 WEBER RD. CORPUS CHRISTI, TX 78413
361/854-2316 361/853-8325 FAX

PROJECT: DEL MAR COLLEGE (GAMC)
NEW ACADEMIC/MUSIC, PHASE 2
ARCHITECT: WKMC ARCHITECTS
361-887-6696
GENERAL CONTRACTOR: BARTLETT COCKE/BEECROFT, A JOINT
361-9882-6791

PROJECT NO. TF-1710-01

DRAWN BY DATE
fp 02/01/18

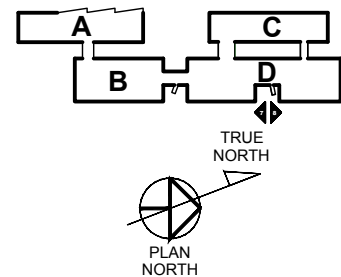
SCALE
1" = 20'-0"

DRAWING
ELEVATIONS

SHEET
E5

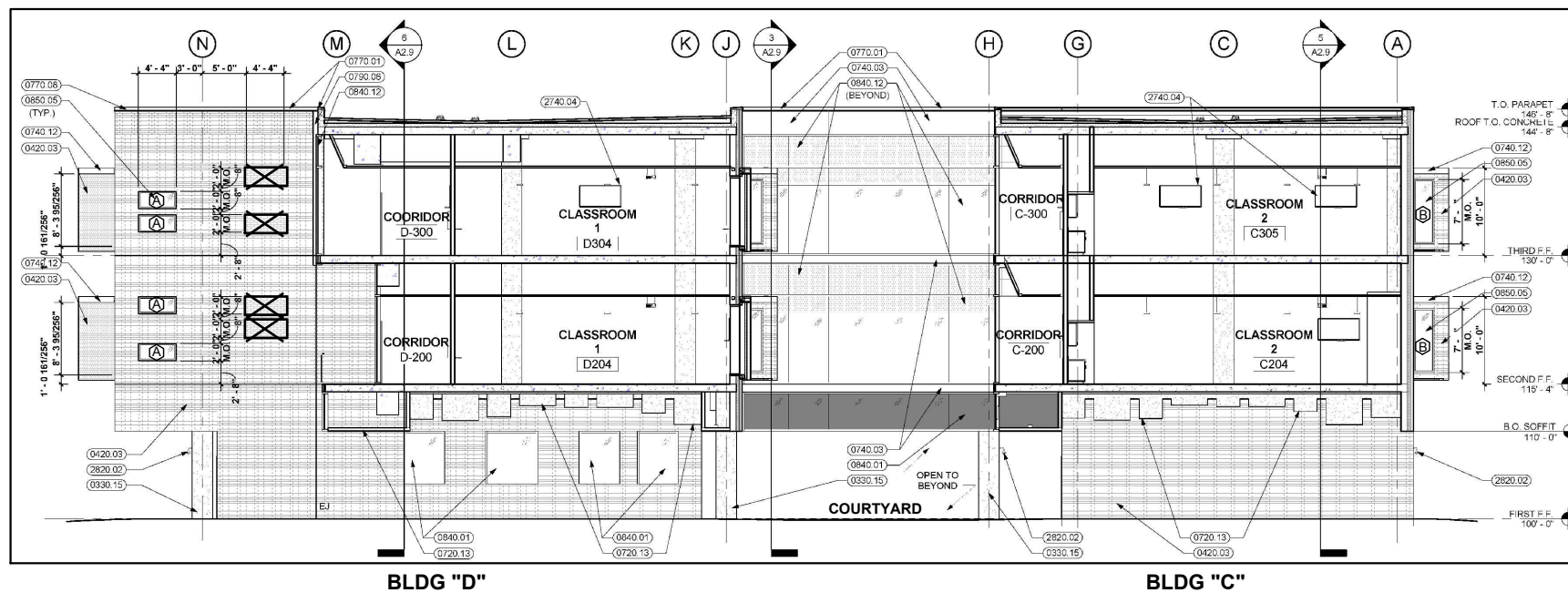
NO.	DATE	DESCRIPTION
1	10/19/17	REVISE TO NAL-FIN-TYPE WINDOWS
2	10/22/17	REVISE TO NAL-FIN-TYPE WINDOWS
3	10/29/17	INTERIOR STOREFRONT WALL SYSTEM & REVISIONS
4	11/01/17	REPLACE VINYL WINDOWS WITH SHOWCASE 413 FIXED WINDOWS
5	1/26/18	INCLUDE A810.10 AND MODIFY INTERIOR GLASS PARTITION ELEVATIONS
6	02/01/18	FIRST SUBMITTAL

BUILDING KEY



KEYNOTES

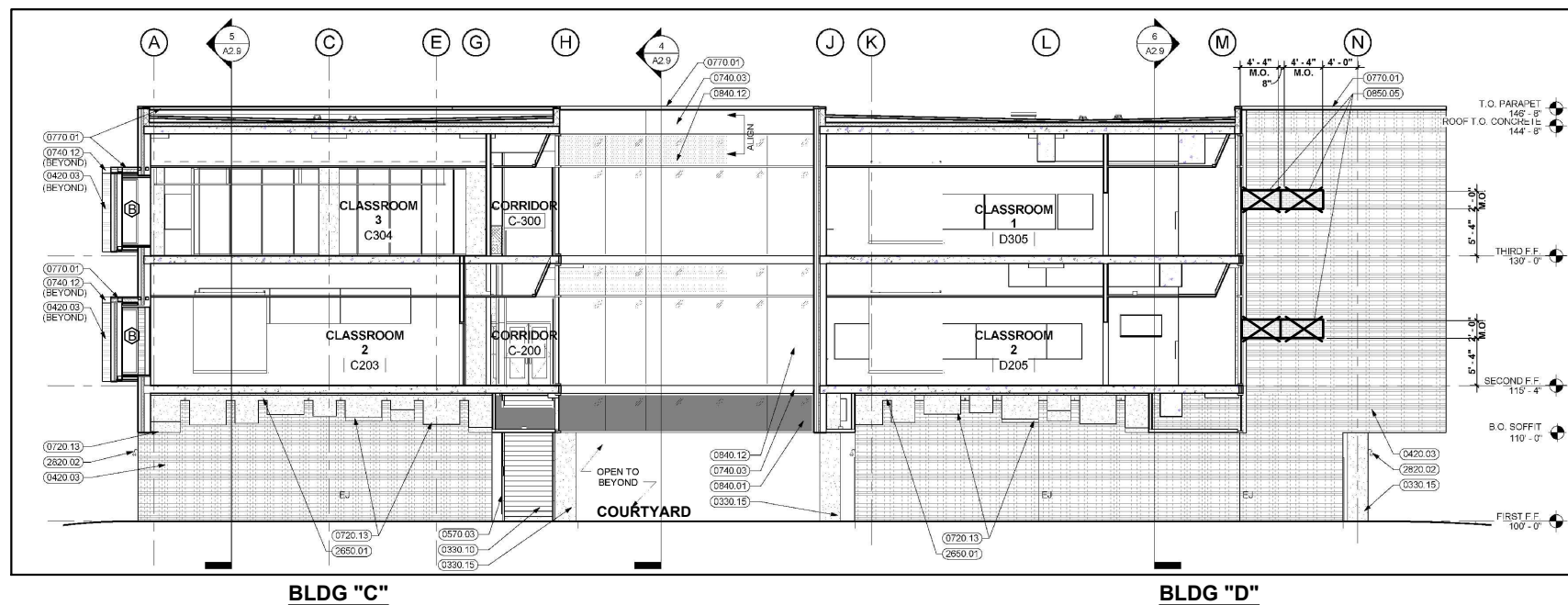
- 0330.10 CONCRETE STAIR
- 0330.15 CONCRETE COLUMN (RE: STRUCTURAL) SMOOTH-RUBBED FINISH
- 0420.03 4" FACE BRICK
- 0570.03 DECORATIVE GUARDRAIL SYSTEM (3'-6" HIGH)
- 0720.13 E.I.F.S. SOFFIT / FASCIA
- 0740.03 PREFINISHED METAL WALL / SOFFIT PANEL WITH REVEALS
- 0740.12 PREFINISHED METAL STANDING SEAM PANELS (TYPE 2)
- 0770.01 PREFINISHED METAL COPING SYSTEM
- 0770.05 STAINLESS STEEL REGLET WITH SEALANT AND COUNTERFLASHING
- 0790.06 2" METAL WALL EXPANSION JOINT COVER
- 0810.04 HOLLOW METAL DOOR AND FRAME
- 0840.01 ALUMINUM STOREFRONT
- 0840.02 ALUMINUM STOREFRONT DOOR
- 0840.12 GLAZED ALUMINUM CURTAINWALL
- 0850.05 FIXED VINYL WINDOW
- 0880.09 GLASS TYPE # 9 (1" CLEAR, INSULATED, LOW-E, TEMPERED)
- 0890.01 PREFINISHED FIXED ALUMINUM LOUVER (WITH INSECT SCREEN)
- 2210.13 ROOF DRAIN / OVERFLOW ROOF DRAIN
- 2650.01 RECESSED LIGHT FIXTURE
- 2650.03 SURFACE-MOUNTED LIGHT FIXTURE
- 2820.02 CCTV CAMERA AND MOUNT
- 3290.01 LANDSCAPE BED



EXTERIOR ELEVATION

SCALE: 1" = 20'-0"
ARCH. REF.: A2.4/1

7 AREA "C+D" (NORTH)
SYSTEM: SHOWCASE 413 FIXED VINYL WINDOWS



EXTERIOR ELEVATION

SCALE: 1" = 20'-0"
ARCH. REF.: A2.4/5

8 AREA "C+D" (SOUTH)
SYSTEM: SHOWCASE 413 FIXED VINYL WINDOWS

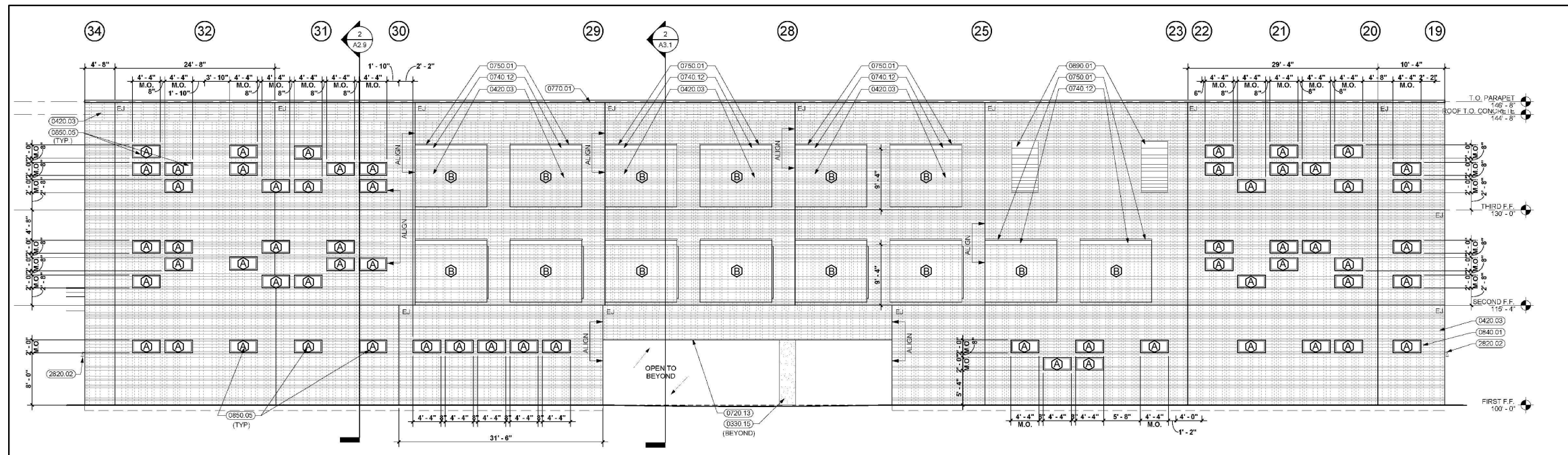
- (A) - TYPE "A" (52"X24") CLEAR GLASS
- (AO) - TYPE "AO" (52"X24") OPAQUE GLASS
- (B) - TYPE "B" (28"X84") CLEAR GLASS

NO.	DATE	DESCRIPTION
6	02/01/18	INCLUDE A31 010, AND MODIFY INTERIOR GLASS PARTITION ELEVATIONS
5	1/26/18	REPLACE VINYL WINDOWS WITH SHOWCASE 413 FIXED WINDOWS
4	11/01/17	INTERIOR STOREFRONT WALL SYSTEM & REVISIONS
3	10/29/17	INTERIOR STOREFRONT WALL SYSTEM & REVISIONS
2	10/22/17	REVISE TO NAIL-FIN-TYPE WINDOWS
1	10/19/17	FIRST SUBMITTAL

THURMAN FONDREN GLASS
6933 WEBER RD. CORPUS CHRISTI, TX 78413
361/854-2316 361/853-8325 FAX

PROJECT: DEL MAR COLLEGE (GAMC)
NEW ACADEMIC/MUSIC, PHASE 2
ARCHITECT: WKMC ARCHITECTS
361-887-6696
GENERAL CONTRACTOR: BARTLETT COCKE/BEECROFT, A JOINT
361-8862-6791

PROJECT NO.	TF-1710-01
DRAWN BY	fp
DATE	02/01/18
SCALE	1" = 20'-0"
DRAWING	ELEVATIONS
SHEET	E6



BLDG "C"

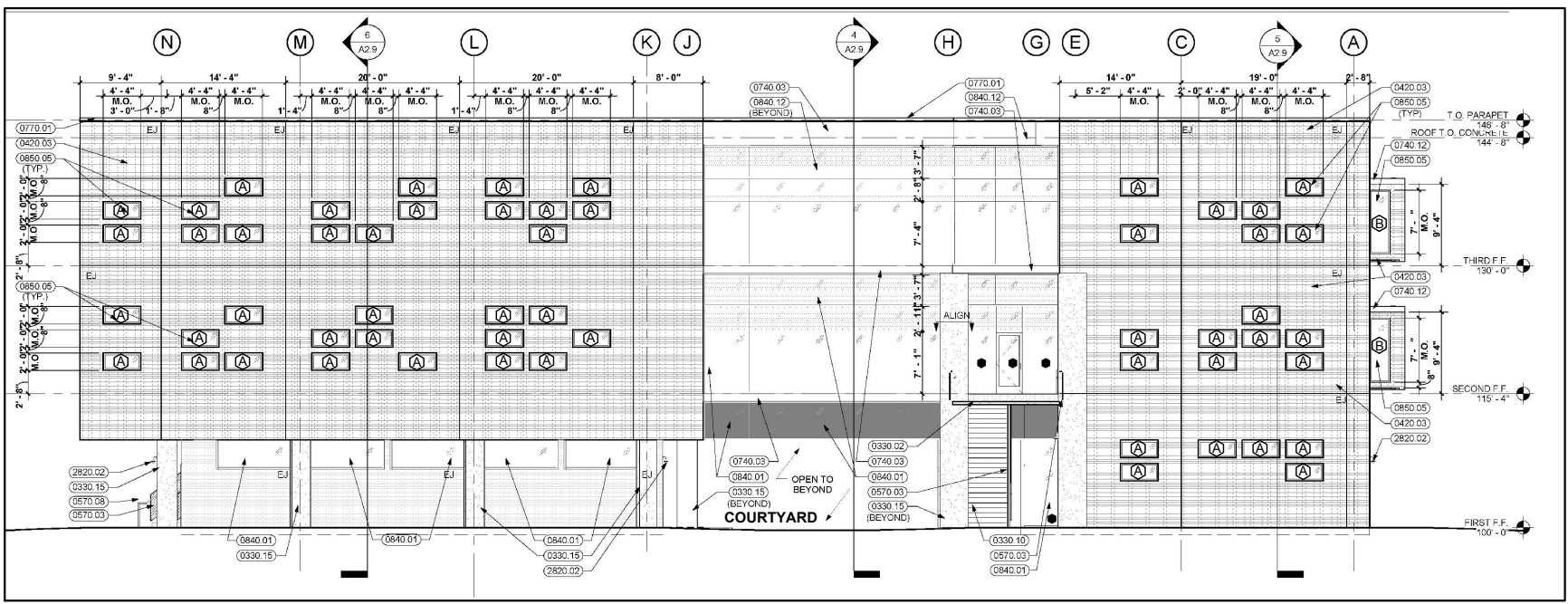
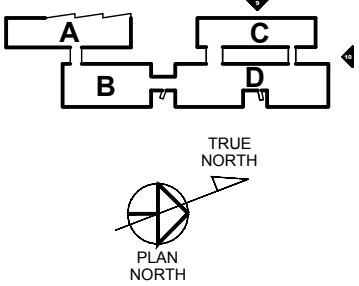
EXTERIOR ELEVATION

SCALE: 1" = 20'-0"
ARCH. REF.: A2.3/3



AREA "C" (WEST)
SYSTEM: SHOWCASE 413 FIXED VINYL WINDOWS

BUILDING KEY



BLDG "D"

BLDG "C"

EXTERIOR ELEVATION

SCALE: 1" = 20'-0"
ARCH. REF.: A2.5/4



AREA "C+D" (NORTH)
SYSTEM: SHOWCASE 413 FIXED VINYL WINDOWS

KEYNOTES

0330.10	CONCRETE STAIR
0330.15	CONCRETE COLUMN (RE: STRUCTURAL) SMOOTH-RUBBED FINISH
0420.03	4" FACE BRICK
0570.03	DECORATIVE GUARDRAIL SYSTEM (3'-6" HIGH)
0720.13	E.I.F.S. SOFFIT / FASCIA
0740.03	PREFINISHED METAL WALL / SOFFIT PANEL WITH REVEALS
0740.12	PREFINISHED METAL STANDING SEAM PANELS (TYPE 2)
0770.01	PREFINISHED METAL COPING SYSTEM
0770.05	STAINLESS STEEL REGLET WITH SEALANT AND COUNTERFLASHING
0790.06	2" METAL WALL EXPANSION JOINT COVER
0810.04	HOLLOW METAL DOOR AND FRAME
0840.01	ALUMINUM STOREFRONT
0840.02	ALUMINUM STOREFRONT DOOR
0840.12	GLAZED ALUMINUM CURTAINWALL
0850.05	FIXED VINYL WINDOW
0880.09	GLASS TYPE #9 (1" CLEAR, INSULATED, LOW-E, TEMPERED)
0890.01	PREFINISHED FIXED ALUMINUM LOUVER (WITH INSECT SCREEN)
2210.13	ROOF DRAIN / OVERFLOW ROOF DRAIN
2650.01	RECESSED LIGHT FIXTURE
2650.03	SURFACE-MOUNTED LIGHT FIXTURE
2820.02	CCTV CAMERA AND MOUNT
3290.01	LANDSCAPE BED

- Ⓐ - TYPE "A" (52"x24") CLEAR GLASS
- Ⓐ⓪ - TYPE "AO" (52"x24") OPAQUE GLASS
- Ⓑ - TYPE "B" (28"x84") CLEAR GLASS

NO.	DATE	DESCRIPTION
6	02/01/18	INCLUDE ASI 010, AND MODIFY INTERIOR GLASS PARTITION ELEVATIONS
5	1/26/18	REPLACE VINYL WINDOWS WITH SHOWCASE 413 FIXED WINDOWS
4	11/01/17	INTERIOR STOREFRONT WALL SYSTEM & REVISIONS
3	10/29/17	INTERIOR STOREFRONT WALL SYSTEM & REVISIONS
2	10/22/17	REVISE TO NAIL-FIN-TYPE WINDOWS
1	10/19/17	FIRST SUBMITTAL

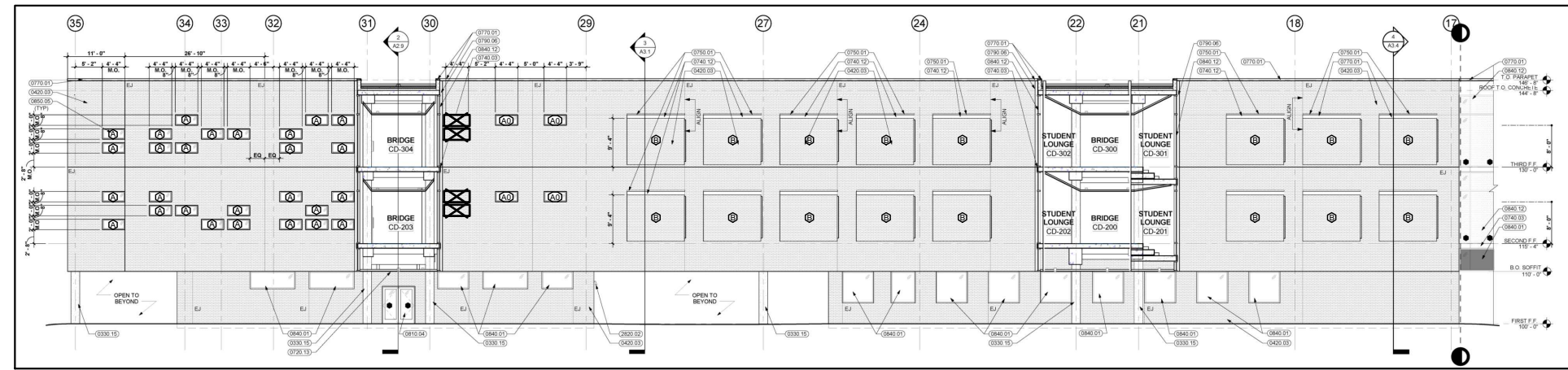
THURMAN FONDREN GLASS
6933 WEBER RD. CORPUS CHRISTI, TX 78413
361/854-2316 361/853-8325 FAX

PROJECT: DEL MAR COLLEGE (GAMC)
NEW ACADEMIC/MUSIC, PHASE 2
ARCHITECT: WKMC ARCHITECTS
361-887-6696
GENERAL CONTRACTOR: BARTLETT COCKE/BEECROFT, A JOINT VENTURE
361-982-6791

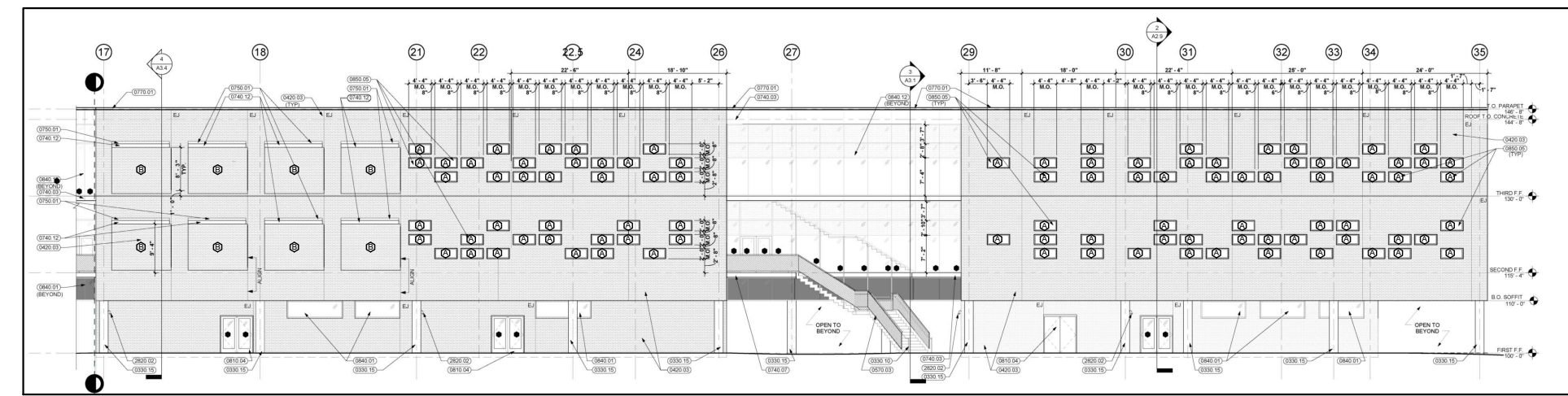
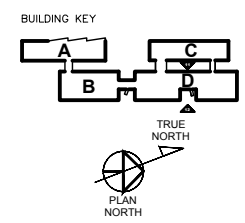
PROJECT NO.	TF-1710-01
DRAWN BY	fp
DATE	02/01/18
SCALE	1" = 20'-0"
DRAWING	ELEVATIONS
SHEET	E7

KEYNOTES

- 0330 10 CONCRETE STAIR
- 0330 15 CONCRETE COLUMN (RE. STRUCTURAL) SMOOTH-RUBBED FINISH
- 0420 03 4" FACE BRICK
- 0570 03 DECORATIVE GUARDRAIL SYSTEM (34" HIGH)
- 0720 13 E.I.F.S. SOFFIT / FASCIA
- 0740 03 TRIMMED METAL WALL / SOFFIT PANEL WITH REVEALS
- 0740 12 PREFINISHED METAL STANDING SEAM PANELS (TYPE 2)
- 0770 01 PREFINISHED METAL COPING SYSTEM
- 0770 05 STAINLESS STEEL RISERLET WITH SEALANT AND COUNTERFLASHING
- 0790 06 2" METAL WALL EXPANSION JOINT COVER
- 0810 04 HOLLOW METAL DOOR AND FRAME
- 0840 01 ALUMINUM STOREFRONT
- 0840 02 ALUMINUM STOREFRONT DOOR
- 0840 12 GLAZED ALUMINUM CURTAINWALL
- 0850 05 FIXED VINYL WINDOW
- 0890 09 CLASS TYPE # 5 | 1" CLEAR, INSULATED, LOW-E, TEMPERED
- 0890 01 PREFINISHED FIXED ALUMINUM LOUVER (WITH INSECT SCREEN)
- 2210 13 ROOF DRAIN OVERFLOW ROOF DRAIN
- 2050 01 RECESSED LIGHT FIXTURE
- 2690 03 SURFACE-MOUNTED LIGHT FIXTURE
- 2820 12 CCTV CAMERA AND MOUNT
- 3390 01 LANDSCAPE BED



EXTERIOR ELEVATION 11 AREA "D" (WEST)
 SCALE: 1" = 30'-0"
 ARCH. REF.: A2.5/3
 SYSTEM: SHOWCASE 413 FIXED VINYL WINDOWS



EXTERIOR ELEVATION 12 AREA "D" (EAST)
 SCALE: 1" = 30'-0"
 ARCH. REF.: A2.6/3
 SYSTEM: SHOWCASE 413 FIXED VINYL WINDOWS

- Ⓐ - TYPE "A" (52"X24") CLEAR GLASS
- ⒶⒶ - TYPE "AO" (52"X24") OPAQUE GLASS
- Ⓑ - TYPE "B" (28"X84") CLEAR GLASS

NO.	DATE	DESCRIPTION
1	10/19/17	FIRST SUBMITTAL
2	10/22/17	REVISE TO NAIL-FIN-TYPE WINDOWS
3	10/29/17	REVISE TO NAIL-FIN-TYPE WINDOWS
4	11/01/17	INTERIOR STOREFRONT WALL SYSTEM & REVISIONS
5	1/26/18	REPLACE VINYL WINDOWS WITH SHOWCASE 413 FIXED WINDOWS
6	02/01/18	INCLUDE A31.010, AND MODIFY INTERIOR GLASS PARTITION ELEVATIONS

THURMAN FONDREN GLASS
 6933 WEBER RD. CORPUS CHRISTI, TX 78413
 361/854-2316 361/853-8325 FAX

PROJECT
 DEL MAR COLLEGE (GAMC)
NEW ACADEMIC/MUSIC, PHASE 2
 ARCHITECT
 WKMC ARCHITECTS
 361-887-6696
 GENERAL CONTRACTOR
 BARTLETT COCKE/BEECROFT, A JOINT
 361-9862-6791

PROJECT NO.	TF-1710-01
DRAWN BY	fp
DATE	02/01/18
SCALE	1" = 30'-0"
DRAWING	ELEVATIONS
SHEET	E8

NO.	DATE	DESCRIPTION
6	02/01/18	INCLUDE ASI 010, AND MODIFY INTERIOR GLASS PARTITION ELEVATIONS
5	1/28/18	REPLACE VINYL WINDOWS WITH SHOWCASE 143 FIXED WINDOWS
4	11/01/17	INTERIOR STOREFRONT WALL SYSTEM & REVISIONS
3	10/29/17	INTERIOR STOREFRONT WALL SYSTEM & REVISIONS
2	10/22/17	REVISE TO NAIL-FIN-TYPE WINDOWS
1	10/19/17	FIRST SUBMITTAL

THURMAN FONDREN GLASS
 6933 WEBER RD. CORPUS CHRISTI, TX 78413
 361/854-2316 361/853-8325 FAX

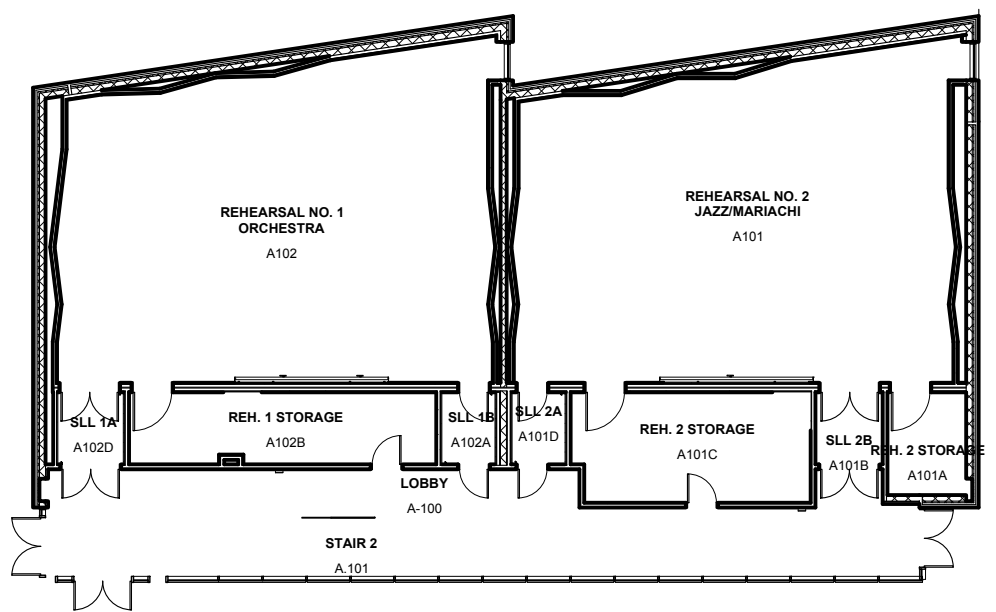
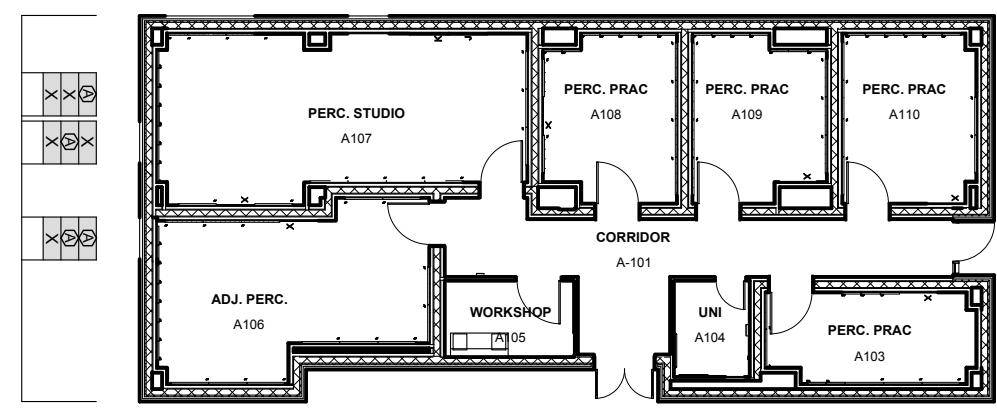
PROJECT: DEL MAR COLLEGE (GAMC)
NEW ACADEMIC/MUSIC, PHASE 2
 ARCHITECT: WKMC ARCHITECTS
 GENERAL CONTRACTOR: BARTLETT COCKE/BEECROFT, A JOINT

PROJECT NO. TF-1710-01
 DRAWN BY: fp DATE: 02/01/18
 SCALE: 1" = 20'-0"
 DRAWING: 1st FLOOR, AB
 SHEET: P1

(A)	X	(A)	(A)	(A)	X
(A)	X	(A)	X	X	X
X	X	X	X	X	X

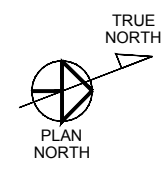
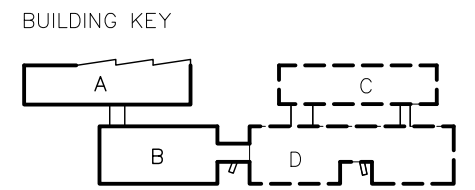
TOP
MIDDLE
BOTTOM
FF

TOP
MIDDLE
BOTTOM
FF



- (A) - TYPE "A" (52" X 24") CLEAR GLASS
- (AO) - TYPE "AO" (52" X 24") OPAQUE GLASS
- (B) - TYPE "B" (28" X 84") CLEAR GLASS

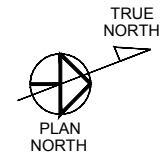
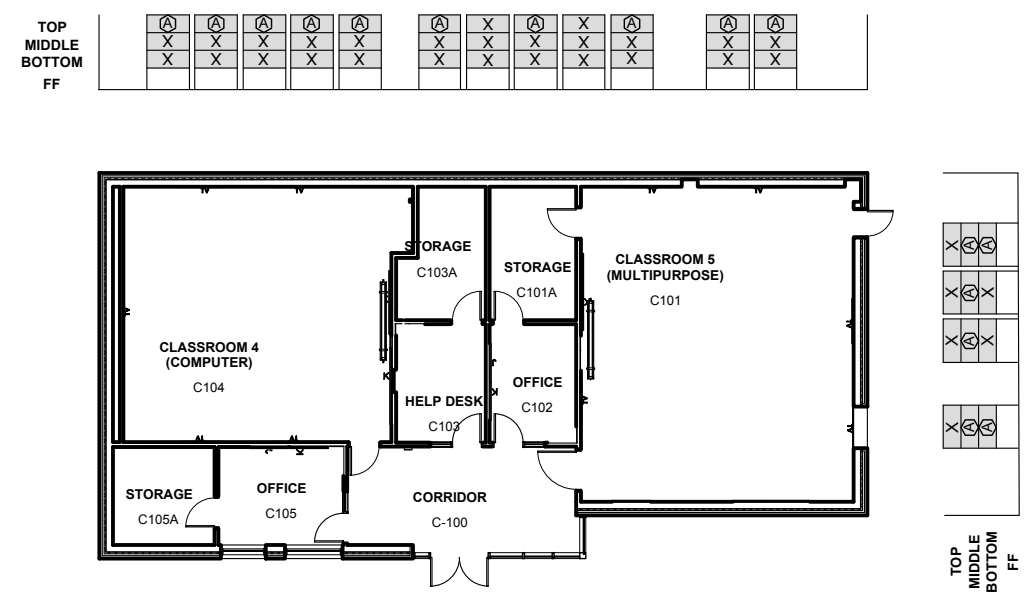
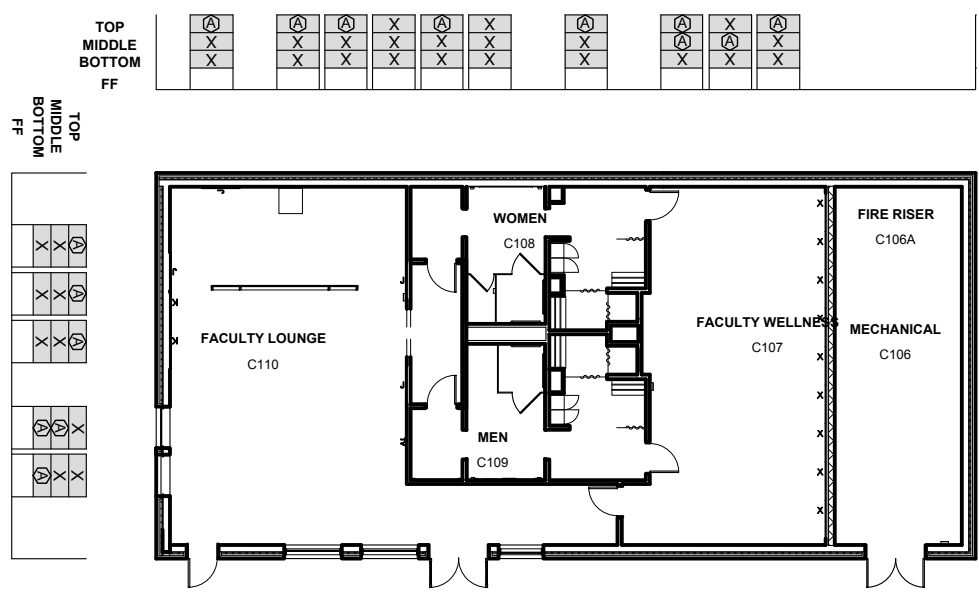
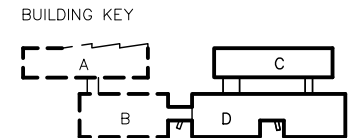
FLOOR PLAN
 SCALE: 1"=20'-0"
 ARCH. REF.: A_1.1A
1ST AREA "A-B"
 SHOWCASE 413 FIXED VINYL WINDOWS



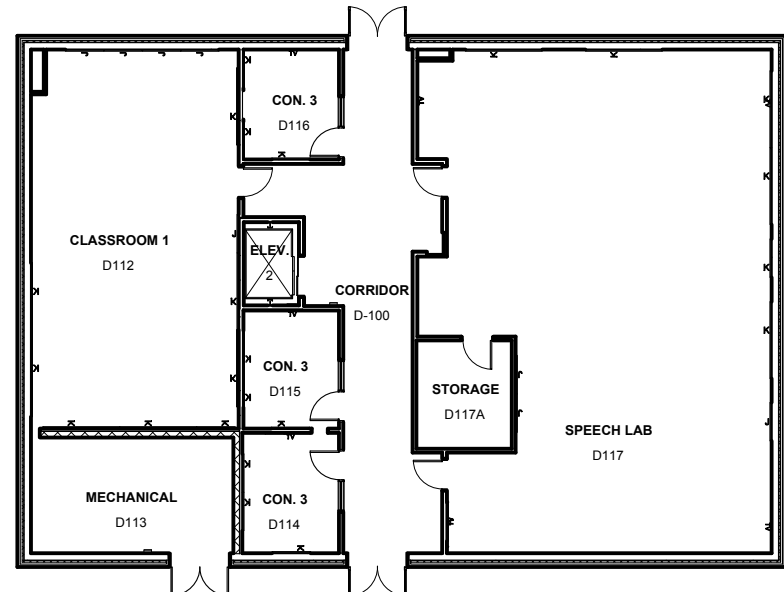
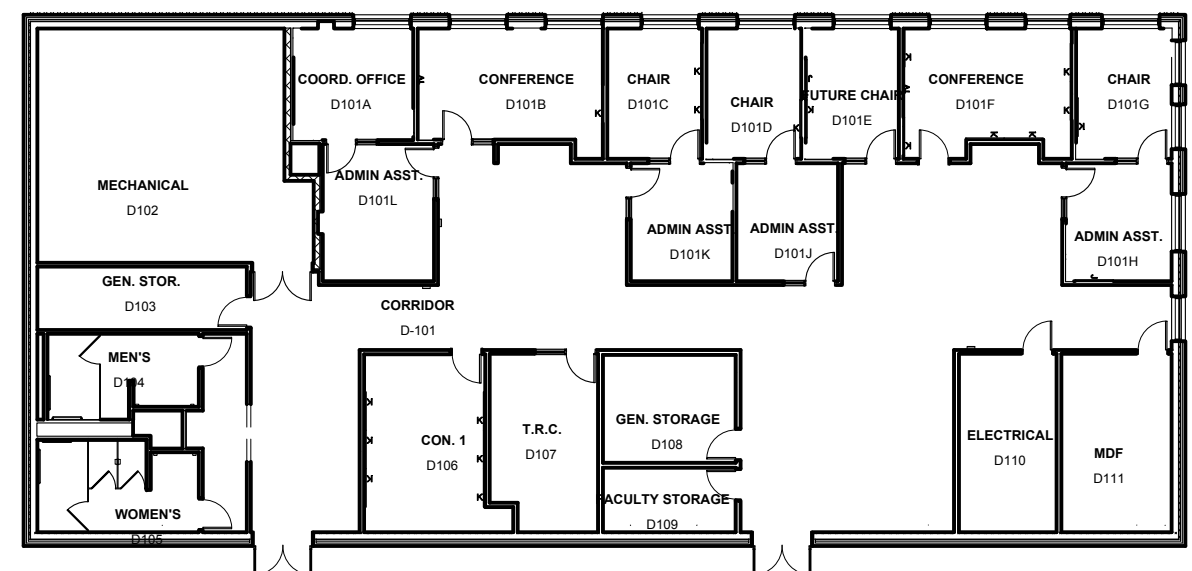
WINDOW COUNT THIS SHEET
 TYPE "A" - 12
 TYPE "B" - 0

FLOOR PLAN
 SCALE: 1"=20'-0"
 ARCH. REF.: A_1.1B

1ST AREA "C-D"
 SHOWCASE 413 FIXED VINYL WINDOWS



- (A) - TYPE "A" (62" X 24") CLEAR GLASS
- (AO) - TYPE "AO" (62" X 24") OPAQUE GLASS
- (B) - TYPE "B" (28" X 84") CLEAR GLASS



WINDOW COUNT THIS SHEET:
 TYPE "A" - 31
 TYPE "B" - 0

NO.	DATE	DESCRIPTION
6	02/01/18	INCLUDE ASI D10, AND MODIFY INTERIOR GLASS PARTITION ELEVATIONS
5	1/28/18	REPLACE VINYL WINDOWS WITH SHOWCASE 413 FIXED WINDOWS
4	11/01/17	INTERIOR STOREFRONT WALL SYSTEM & REVISIONS
3	10/29/17	INTERIOR STOREFRONT WALL SYSTEM & REVISIONS
2	10/22/17	REVISE TO NAIL-FIN-TYPE WINDOWS
1	10/19/17	FIRST SUBMITTAL

THURMAN FONDREN GLASS
 6933 WEBER RD. CORPUS CHRISTI, TX 78413
 361/854-2316 361/853-8325 FAX

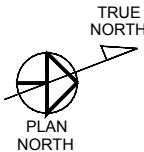
PROJECT: DEL MAR COLLEGE (GAMC)
NEW ACADEMIC/MUSIC, PHASE 2
 ARCHITECT: WKMC ARCHITECTS
 361-887-6896
 GENERAL CONTRACTOR: BARTLETT COCKE/BEECROFT, A JOINT
 361-882-6791

PROJECT NO. TF-1710-01
 DRAWN BY fp DATE 02/01/18
 SCALE 1" = 20'-0"
 DRAWING 1st FLOOR, CD
 SHEET P4

FLOOR PLAN
 SCALE: 1"=20'-0"
 ARCH. REF.: A_1.2B

2ND AREA "C-D"

SHOWCASE 413 FIXED VINYL WINDOWS



NO.	DATE	DESCRIPTION
6	02/01/18	INCLUDE ASI 010, AND MODIFY INTERIOR GLASS PARTITION ELEVATIONS
5	1/28/18	REPLACE VINYL WINDOWS WITH SHOWCASE 413 FIXED WINDOWS
4	11/01/17	INTERIOR STOREFRONT WALL SYSTEM & REVISIONS
3	10/29/17	INTERIOR STOREFRONT WALL SYSTEM & REVISIONS
2	10/22/17	REVISE TO NAIL-FIN-TYPE WINDOWS
1	10/19/17	FIRST SUBMITTAL

THURMAN FONDREN GLASS
 6933 WEBER RD. CORPUS CHRISTI, TX 78413
 361/854-2316 361/853-8325 FAX

PROJECT: DEL MAR COLLEGE (GAMC)
NEW ACADEMIC/MUSIC, PHASE 2
 ARCHITECT: WKMC ARCHITECTS
 361-887-6896
 GENERAL CONTRACTOR: BARTLETT COCKE/BEECROFT, A JOINT
 361-882-9791

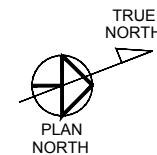
PROJECT NO. TF-1710-01
 DRAWN BY fp DATE 02/01/18
 SCALE 1" = 20'-0"
 DRAWING 2nd FLOOR, CD
 SHEET **P5**

FLOOR PLAN

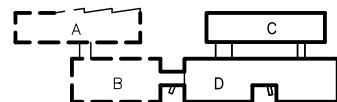
SCALE: 1"=20'-0"
ARCH. REF.: A_1.3A

3RD AREA "C-D"

SHOWCASE 413 FIXED VINYL WINDOWS



BUILDING KEY

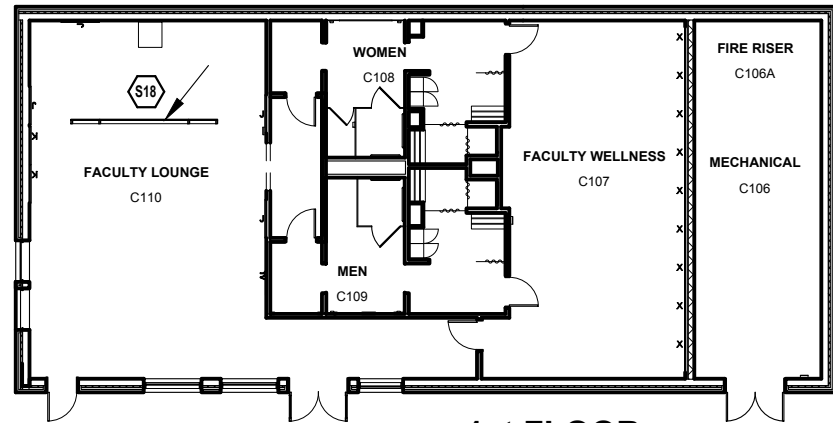


NO.	DATE	DESCRIPTION
6	02/01/18	INCLUDE ASI 010, AND MODIFY INTERIOR GLASS PARTITION ELEVATIONS
5	1/28/18	REPLACE VINYL WINDOWS WITH SHOWCASE 143 FIXED WINDOWS
4	11/01/17	INTERIOR STOREFRONT WALL SYSTEM & REVISIONS
3	10/29/17	INTERIOR STOREFRONT WALL SYSTEM & REVISIONS
2	10/22/17	REVISE TO NAIL-FIN-TYPE WINDOWS
1	10/19/17	FIRST SUBMITTAL

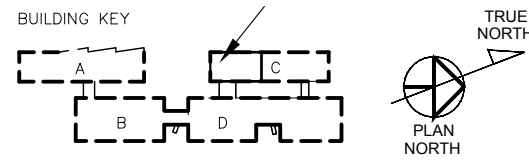
THURMAN FONDREN GLASS
 6933 WEBER RD. CORPUS CHRISTI, TX 78413
 361/854-2316 361/853-8325 FAX

PROJECT: DEL MAR COLLEGE (GAMC)
NEW ACADEMIC/MUSIC, PHASE 2
 ARCHITECT: WKMC ARCHITECTS
 361-887-6896
 GENERAL CONTRACTOR: BARTLETT COCKE/BEECROFT, A JOINT
 361-882-6791

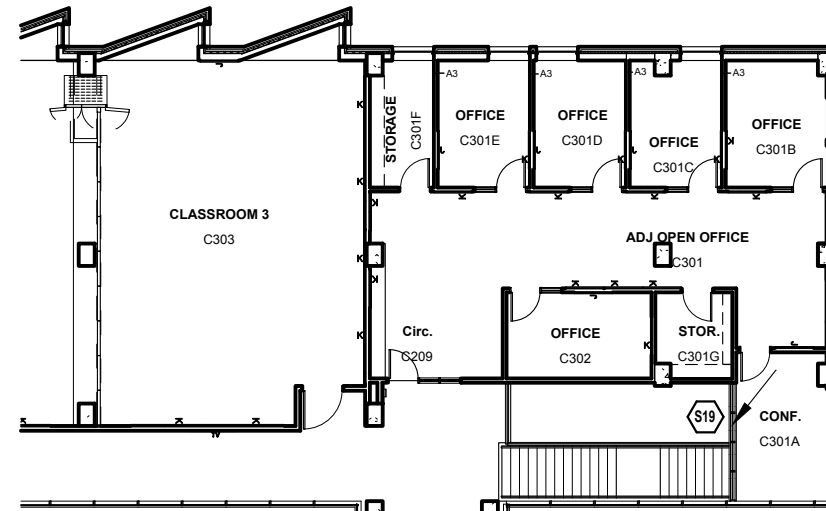
PROJECT NO. TF-1710-01
 DRAWN BY fp DATE 02/01/18
 SCALE 1" = 20'-0"
 DRAWING 3rd FLOOR, CD
 SHEET **P6**



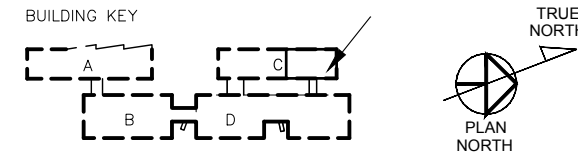
1st FLOOR AREA "C"



FLOOR PLAN
 SCALE: 1/4" = 1'-0"
 ARCH. REF.: A1.1B, A7.4/18
1st AREA "PARTIAL 'C'"
 CRL US ALUMINUM, SERIES 487 INTERIOR PARTITION

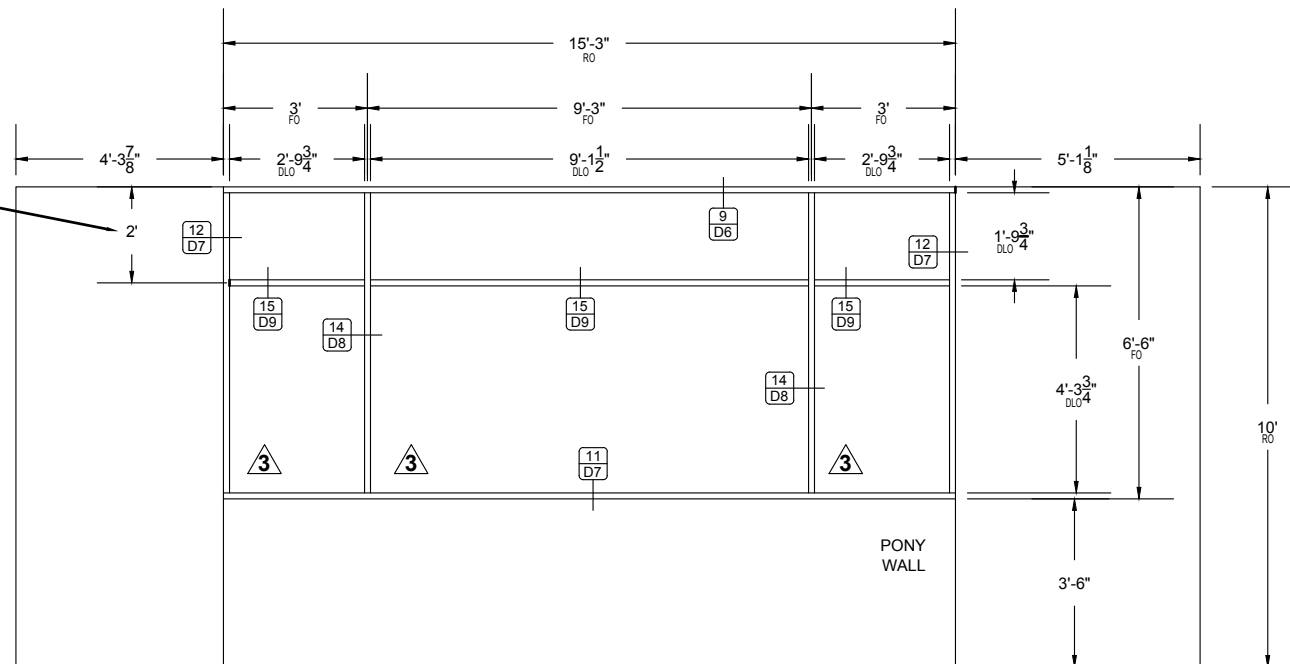


3rd FLOOR AREA "C"

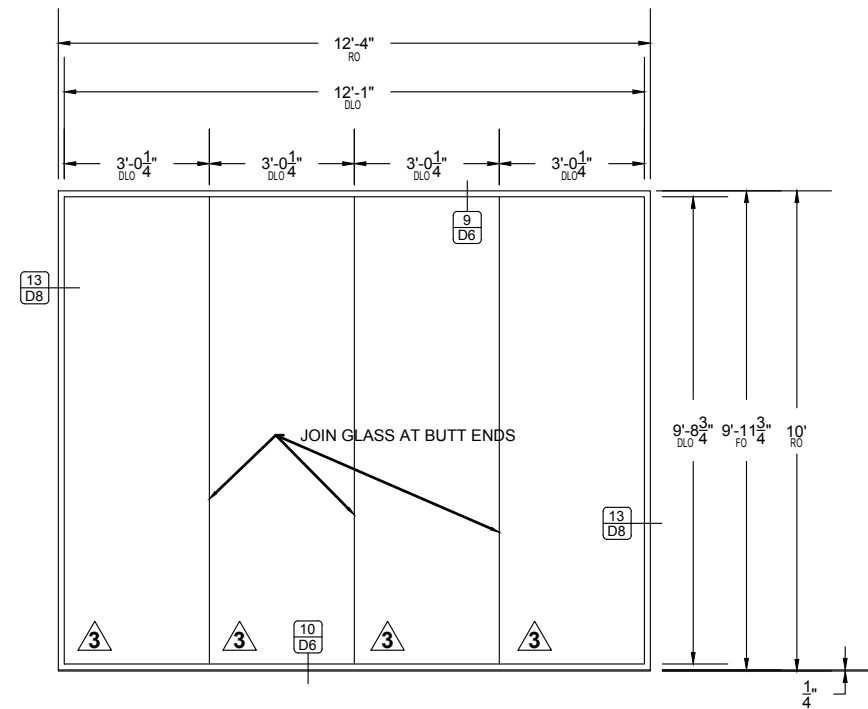


FLOOR PLAN
 SCALE: 1/4" = 1'-0"
 ARCH. REF.: A1.3B, A7.12/8
3rd AREA "PARTIAL 'C'"
 CRL US ALUMINUM, SERIES 487 INTERIOR PARTITION

Note to Architect:
 VERIFY DIMENSION



ELEVATION
 SCALE: 1/4" = 1'-0"
 ARCH. REF.: A1.1A, A7.4/18
S18 AREA "C"
 CRL US ALUMINUM, SERIES 487 INTERIOR PARTITION



ELEVATION
 SCALE: 1/4" = 1'-0"
 ARCH. REF.: A1.3A, A7.12/8
S19 AREA "C"
 CRL US ALUMINUM, SERIES 487 INTERIOR PARTITION

NO.	DATE	DESCRIPTION
6	02/01/18	INCLUDE ASI C10 AND MODIFY INTERIOR GLASS PARTITION ELEVATIONS
5	1/28/18	REPLACE VINYL WINDOWS WITH SHOWCASE 143 FIXED WINDOWS
4	11/01/17	INTERIOR STOREFRONT WALL SYSTEM & REVISIONS
3	10/29/17	INTERIOR STOREFRONT WALL SYSTEM & REVISIONS
2	10/22/17	REVISE TO NAIL-FIN-TYPE WINDOWS
1	10/19/17	FIRST SUBMITTAL

THURMAN FONDREN GLASS
 6933 WEBER RD. CORPUS CHRISTI, TX 78413
 361/854-2316 361/853-8325 FAX

PROJECT: DEL MAR COLLEGE (GAMC)
NEW ACADEMIC/MUSIC, PHASE 2
 ARCHITECT: WKMC ARCHITECTS
 GENERAL CONTRACTOR: BARTLETT COCKE/BEECROFT, A JOINT VENTURE
 361-882-6791

PROJECT NO.: TF-1710-01
 DRAWN BY: fp DATE: 02/01/18
 SCALE: SEE DRAWINGS
 DRAWING: 3rd FLOOR, CD
 SHEET: P7